

H3132

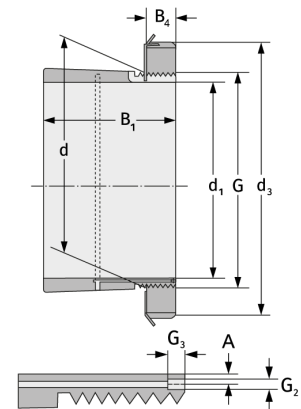
Clamping Sleeves



Details:

Main dimensions

d [mm]	160	B ₂ [mm]	28
Weight [kg]	≈ 7.67	G [mm]	M160x
d ₁ [mm]	140		3
d ₂ [mm]	210	G ₁ [mm]	M6
B ₁ [mm]	119	l _{G1} [mm]	7
		a [mm]	4.2



Mating dimensions

Containing components

Groove / shaft nut

KM32

Securing

MB32