

# 7260B.MP

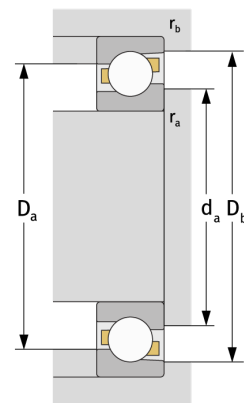
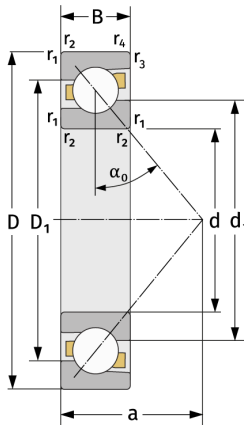
Angular Contact Ball Bearings (single row, metric)



## Details:

### Main dimensions

d [mm]	300	$D_1$ [mm]	$\approx 451.6$
D [mm]	540	$r_{1,2}$ [mm]	5
B [mm]	85	$r_{3,4}$ [mm]	2
Weight [kg]	$\approx 86.7$	$\alpha_0$ [°]	40
$d_1$ [mm]	$\approx 395.1$	a [mm]	$\approx 219$



### Mating dimensions

### Calculation data

$d_{a, \min}$ [mm]	320	C [kN]	560
$D_{a, \max}$ [mm]	520	$C_0$ [kN]	940
$D_{b, \max}$ [mm]	529	$C_u$ [kN]	22.8
$r_{a, \max}$ [mm]	4	$n_{th}$ [min <sup>-1</sup> ]	1227
$r_{b, \max}$ [mm]	2	$n_g$ [min <sup>-1</sup> ]	1500